



Shalfleet C.E. Primary

The purpose of the Federation of the Church Schools of Shalfleet, Freshwater and Yarmouth is to educate children in an atmosphere of Christian love where all achieve the very best they can, now and throughout their lives.

<http://fosay.co.uk>

Headteacher: Mrs. E Grainger

Deputy Headteacher: Mrs. G Westhorpe

RESPECT • RESILIENCE • RELATIONSHIPS

[Letters Home](#)

Attendance Matters



Attendance

Over a school year, we are due to open for 190 days which equates to 380 sessions with registration in the morning at 8.35am and after lunch in the afternoon.

Attendance is affected if a pupil is not present at school for any whole session including registration.

Attendance Target

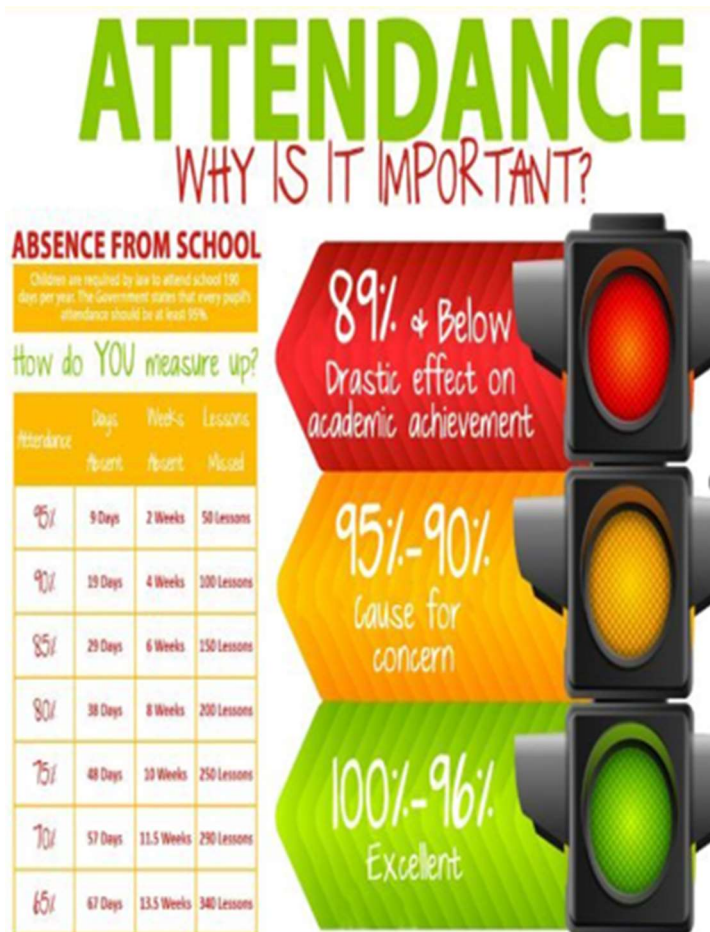
100%

Attendance Last Week

95%

Attendance This Year

94%



• Important Information

Dates for your Diary

27th June – Year 1 Sharing Worship
3rd and 4th July – Residential Year 6
3rd July – Tapnell Farm / Aqua Park Year 5
4th July Harry Potter World Year 4
8th July – Transition Day
9th July – Blue Reef Year 1
10th July – Sports Days
11th July – Reception Class Sharing Worship
11th July - Windsor Castle Year 2
11th July – Portsmouth Cathedral Year 6 Leavers
15th July – Shalfleet Leavers Play
18th July – Summer Fair
22nd July – Shalfleet Year 6 Leavers Meal
25th July – Leavers Worship
25th July – Last day of term finish at 1.30pm

Development Days

Monday 28th and Tuesday 29th July
Monday 1st and Tuesday 2nd September
School we will be closed on these days



In the Community

Lost Property

Please could parents/ carers ensure all clothing is clearly labelled.

We have a growing amount of lost property without names, if you think this could be yours please pop into the school office to have a look.

Many thanks

Federation Mission Statement and Values

Mission Statement

'We value and respect everyone within an atmosphere of Christian love. Our welcoming community builds strong relationships and is dedicated to supporting everyone to flourish academically, emotionally, socially and culturally through an excellent and engaging curriculum.'

Values

Respect

Resilience

Relationships

Together for a Brighter Future

'The Lord will watch over your coming and going both now and forevermore'

Psalm: 121

Gold Awards

Reception Class – Savannah, Rohnan

Year 1 – Logan, Grayson, Olwen

Year 2 – Ashleigh, Emily,

Year 3 – William, Aurora

Year 4 – Bobby, Reggie,

Year 5 – Fran G, William

Year 6 – Georgia, Logan

Well done to our Gold Award winners.



Birthdays

21st – 27th June

Ashton

Happy birthday to you!

Outdoor learning Golden Wellie

Golden Welly

Will continue next week.....

Keep up the great work!



Sports Tokens

This week's sports token totals are:

Lighthouse –24

Needles – 22

Lifeboat – 22

Osbourne – 23

Well Done everyone!

Our Mission Statement

We value and respect everyone within an atmosphere of Christian love. Our welcoming community builds strong relationships and is dedicated to supporting everyone to flourish academically, emotionally, socially and culturally through an excellent and engaging curriculum.

Values

Our three R's are incredibly important to us. They represent qualities we believe everyone can identify with, regardless of age or role in our conscious community. They are the backbone to the conscious community as a whole.



RESPECT



RESILIENCE



RELATIONSHIPS

Attendance

We prioritise the attendance of all children at our school and recognise the very strong link between attendance and academic success.

When you register your child at our school, you have a legal duty to ensure that your child attends every day that the school is open except in a small number of circumstances such as being too ill to attend or being given permission for an absence in advance (not holidays).

We will work together to help overcome any attendance issues.



The Federation of Muslim Schools of Australia

The Conscious Community

What is the conscious community?
Every person in our federation - including you and all adults - has an important responsibility. That is to be the best you can be. To do this you need to be aware of all that you do and feel; you also need to be aware of what others are doing and feeling too. This is what being in a conscious community is all about.

Conscious = Aware Community = All together

How do I make sure I am part of this? By thinking about both your actions/feelings and the actions/feelings of others through 3 important values:

Respect	Resilience	Relationships
<ul style="list-style-type: none">Celebrate your skills and talentsRecognise what makes you greatBe proud of what you achieveCelebrate other people's skills and talentsRecognise what makes other people greatBe proud of what other people achieve	<ul style="list-style-type: none">Making mistakes are greatIt's how we growIt is important we always respect them and leave them aloneAsk yourself these questions about your actions or the actions of others...Why do I 'they' feel this way?Are they healthy that situation in the best possible way?What could I 'they' do to improve the situation?Are I 'they' do the best I 'they' could?What can we learn from this situation?How can we move forward positively?	<ul style="list-style-type: none">Show a good understanding of yourself and others by knowing what inspires you both, what you want, your beliefs, your needs and what can cause you and them to feel a certain way.In situations ask yourself and others...What is my 'their' point of view?What are my 'their' reasons?How are I 'they' feeling?What am I 'they' bringing to this situation?

In a conscious community...

We are open	We are honest	We listen
We ask questions	We speak up	We respect privacy

Wellbeing

We acknowledge that mental health and wellbeing is of central importance and intrinsic to our lives.

We believe having a mentally healthy community is about being able to work together through any challenges and that everyone is feeling supported, heard, accepted, valued and empowered.

It is of paramount importance that if there is anything you feel is affecting your child's wellbeing or educational experience that you get in contact with us.

Dear Parents/Carers,

We have had an increasing number of parents who arrive at school to speak to a member of staff without an appointment. This inevitably causes some upset if the member of staff is unavailable due to other commitments. To avoid this, please call school ahead of any visit to arrange a meeting. Our support/pastoral staff have multiple meetings and commitments every day; whilst they always do their level best to accommodate you, they do need advance notice of any visits or meetings.

We also understand that sometimes emergencies happen that can delay you from collecting your child at the end of their school day.

If this should occur, we ask that you contact the school office as soon as possible to inform us of your delay. Children not collected by 3.15pm will be taken to Little Explorers After School Club.

Please note that if your child is taken to our after-school club, there will be a charge applied for the care of your child from 3.15pm and until you collect.

Many thanks for your help and understanding.

Chartwells

From the 4th September the Chartwell school lunches will increase as follows:

Child's meal £2.97 (for key-stage 2 – Years 3,4,5,6)

We are a Nut Free School

Please can we remind you that we are a nut free school.

Please do not give your child's any nut containing products for their snack or their lunch box. This includes Nutella or any other chocolate nut spreads and Kinder Bueno bars.

Healthy Lunch Box

We encourage everyone to pack nutritious lunches and snacks for children – think fruits, veggies, whole grains and protein packed options. We're aiming to keep sugary snack and processed foods to a minimum to help our children stay energized and focused throughout the day.

Thank you so much for supporting our health school goals and helping children make good choices!

Occupational therapy

Parent advice sessions

The NHS Occupational Therapy Team will be running monthly parent advice sessions. These sessions are open to any families which don't have an existing referral.

The sessions will be with an Occupational Therapist and an Assistant.

The team will be able to give advice, signpost to other services / charities and support with completing a full referral to Occupational Therapy if it is felt the needs discussed require a full assessment.

The team will be able to support with advice around:

- Self Care tasks - e.g. washing, dressing, using cutlery, toileting
- Fine motor skill development
- Play skills
- Preschool / school readiness



Session Dates for 2025

(more dates and locations may be added if required):

15 May, 19 June, 17 July, 18 September, 16 October, 20 November

Slots will be available at 9am, 10am and 11am.

Appointments will last for 45mins.

To book, contact the department on **01983 534520** or via email to **iownt.paediatric-ot-mailbox@nhs.net**

Sessions will take place at the Childrens Therapies Department,
St Mary's Hospital, Newport, Isle of Wight

FREE online talk



Supporting Healthy Screen Use

Screens are here to stay.
What are the potential harms and
how can we reduce them?

To book your place
go to the **PARENTS** page (facefamilyadvice.co.uk)



Drop in Sessions

- Free impartial and confidential advice relating to SEND for 0-25 years.
- Peer support, talking to others who may be experiencing a similar journey
- Free beverages and biscuits

25 JUNE

09:30 – 11:30
Ryde Family Centre
PO33 2JF
12:30 – 14:30
East Cowes Family Centre
PO32 6PA

17 JULY

12:30 – 14:30
Newport Family Centre
PO30 2AX
16:00 – 18:00
West Wight Family Centre
PO40 9XH

26 AUG

09:30 – 11:30
Sandown Family Centre
PO36 9EQ
11:30 – 14:30
Ventnor Family Centre
PO38 1EX

No booking required

Any questions email:
info@iowsendiass.org.uk

A huge thank you to Barnardo's Family Hubs for the use of their family centres for our in-person sessions across the island.

