



# Shalfleet C.E. Primary

The purpose of the Federation of the Church Schools of Shalfleet, Freshwater and Yarmouth is to educate children in an atmosphere of Christian love where all achieve the very best they can, now and throughout their lives.

<http://fosay.co.uk>

Headteacher: Mrs. E Grainger

Deputy Headteacher: Mrs. G Westhorpe

**RESPECT • RESILIENCE • RELATIONSHIPS**

[Letters Home](#)

## Attendance Matters



### Attendance

Over a school year, we are due to open for 190 days which equates to 380 sessions with registration in the morning at 8.35am and after lunch in the afternoon.

**Attendance is affected if a pupil is not present at school for any whole session including registration.**

**Attendance Target**

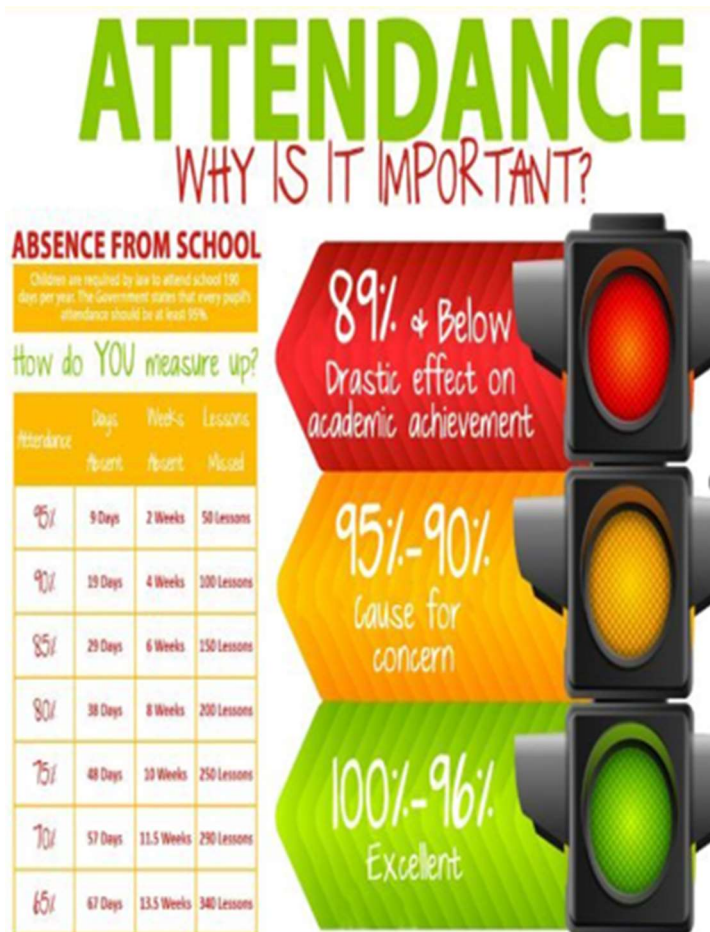
**100%**

**Attendance Last Week**

**95%**

**Attendance This Year**

**95%**



- **Important Information**

### Dates for your Diary

2<sup>nd</sup> May – Year 4 Sharing Worship  
15<sup>th</sup> May – Year 4 Trip Ventnor Botanic  
16<sup>th</sup> May – Year 3 Sharing Worship  
16<sup>th</sup> May – Year 6 Paulton's Park  
20<sup>th</sup> May – Parent Forum 1.45pm @ School  
22<sup>nd</sup> May – Reception Class Beaulieu  
13<sup>th</sup> June – Year 2 Sharing Worship  
27<sup>th</sup> June – Year 1 Sharing Worship  
11<sup>th</sup> July – Year R Sharing Worship

### Development Days

Monday 2<sup>nd</sup> June  
Monday 28<sup>th</sup> and Tuesday 29<sup>th</sup> July  
School we will be closed on these days



### **In the Community**

#### Lost Property

Please could parents/ carers ensure all clothing is clearly labelled.

We have a growing amount of lost property without names, if you think this could be yours please pop into the school office to have a look.

Many thanks

### Federation Mission Statement and Values

#### Mission Statement

'We value and respect everyone within an atmosphere of Christian love. Our welcoming community builds strong relationships and is dedicated to supporting everyone to flourish academically, emotionally, socially and culturally through an excellent and engaging curriculum.'

#### Values

**Respect**

**Resilience**

**Relationships**

*Together for a Brighter Future*

*"From the rising of the sun to its going down  
The Lord's name is to be praised."  
Psalm 113:3*

## Gold Awards

Reception Class – Ellie, Myles, Poppy  
Year 1 – Hanna, Poppy W, Logan  
Year 2 – Whole Class  
Year 3 – Reggie, Alfie P, Oliver  
Year 4 – Meadow, Oliver P, Evalyn  
Year 5 – Imogen, Eli, Charlie  
Year 6 – Henry, Penny

Well done to our Gold Award winners.



### Birthdays

26<sup>th</sup> April – 2<sup>nd</sup> May 2025

Flora    Aurora

Oliver P    Maisie P

Happy birthday to you!

### Outdoor learning Golden Wellie

Golden Welly

Jack

Keep up the great work!



### Sports Tokens

This week's sports token totals are:

Lighthouse – 18

Needles – 25

Lifeboat – 22

Osbourne – 20

Well Done everyone!

## Our Mission Statement

We value and respect everyone within an atmosphere of Christian love. Our welcoming community builds strong relationships and is dedicated to supporting everyone to flourish academically, emotionally, socially and culturally through an excellent and engaging curriculum.

## Values

Our three R's are incredibly important to us. They represent qualities we believe everyone can identify with, regardless of age or role in our conscious community. They are the backbone to the conscious community as a whole.



**RESPECT**



**RESILIENCE**



**RELATIONSHIPS**

## Attendance

We prioritise the attendance of all children at our school and recognise the very strong link between attendance and academic success.

When you register your child at our school, you have a legal duty to ensure that your child attends every day that the school is open except in a small number of circumstances such as being too ill to attend or being given permission for an absence in advance (not holidays).

We will work together to help overcome any attendance issues.



The Federation of Muslim Schools of Australia

## The Conscious Community

**What is the conscious community?**  
Every person in our federation - including you and all adults - has an important responsibility. That is to be the best you can be. To do this you need to be aware of all that you do and feel; you also need to be aware of what others are doing and feeling too. This is what being in a conscious community is all about.

**Conscious = Aware      Community = All together**

How do I make sure I am part of this?      By thinking about both your actions/feelings and the actions/feelings of others through 3 important values:

Respect	Resilience	Relationships
<ul style="list-style-type: none"><li>Celebrate your skills and talents</li><li>Recognise what makes you great</li><li>Be proud of what you achieve</li><li>Celebrate other people's skills and talents</li><li>Recognise what makes other people great</li><li>Be proud of what other people achieve</li></ul>	<ul style="list-style-type: none"><li>Making mistakes are great</li><li>It's how we grow</li><li>It is important we always respect them and leave them alone</li><li>Ask yourself these questions about your actions or the actions of others...<ul style="list-style-type: none"><li>Why do I/they feel this way?</li><li>Are I/they handle that situation in the best possible way?</li><li>What could I/they do to improve the situation?</li><li>Are I/they do the best I/they could?</li><li>What can we learn from this situation?</li><li>How can we move forward positively?</li></ul></li></ul>	<ul style="list-style-type: none"><li>Show a good understanding of yourself and others by knowing what inspires you both, what you want, your beliefs, your needs and what can cause you and them to feel a certain way.</li><li>In situations ask yourself and others...<ul style="list-style-type: none"><li>What is my/their point of view?</li><li>What are my/their reasons?</li><li>How am I/they feeling?</li><li>What am I/they bringing to this situation?</li></ul></li></ul>

**In a conscious community...**

We are open We ask questions	We are honest We speak up	We listen We respect privacy
---------------------------------	------------------------------	---------------------------------

## Wellbeing

We acknowledge that mental health and wellbeing is of central importance and intrinsic to our lives.

We believe having a mentally healthy community is about being able to work together through any challenges and that everyone is feeling supported, heard, accepted, valued and empowered.

It is of paramount importance that if there is anything you feel is affecting your child's wellbeing or educational experience that you get in contact with us.



Dear Parents/Carers,

We have had an increasing number of parents who arrive at school to speak to a member of staff without an appointment. This inevitably causes some upset if the member of staff is unavailable due to other commitments. To avoid this, please call school ahead of any visit to arrange a meeting. Our support/pastoral staff have multiple meetings and commitments every day; whilst they always do their level best to accommodate you, they do need advance notice of any visits or meetings.

We also understand that sometimes emergencies happen that can delay you from collecting your child at the end of their school day.

If this should occur, we ask that you contact the school office as soon as possible to inform us of your delay. Children not collected by 3.15pm will be taken to Little Explorers After School Club.

Please note that if your child is taken to our after-school club, there will be a charge applied for the care of your child from 3.15pm and until you collect.

Many thanks for your help and understanding.

### Chartwells

From the 4<sup>th</sup> September the Chartwell school lunches will increase as follows:

Child's meal £2.97 (for key-stage 2 – Years 3,4,5,6)

### We are a Nut Free School

Please can we remind you that we are a nut free school.

Please do not give your child's any nut containing products for their snack or their lunch box. This includes Nutella or any other chocolate nut spreads and Kinder Bueno bars.

### Healthy Lunch Box

We encourage everyone to pack nutritious lunches and snacks for children – think fruits, veggies, whole grains and protein packed options. We're aiming to keep sugary snack and processed foods to a minimum to help our children stay energized and focused throughout the day.

Thank you so much for supporting our health school goals and helping children make good choices!






Want to make a real difference and inspire the next generation?

**STUDY A PGCE AND BECOME A TEACHER**

- Qualify as a primary or secondary teacher in just one year and start fulfilling your career.
- Gain the skills and experience to secure your first teaching job with qualified teacher status (QTS)
- We work with a range of excellent partnership schools across West and East Sussex, Hampshire, Isle of Wight and Surrey
- It's a well respected, varied and challenging career, where you can have a positive impact on the lives of young people
- It is not as expensive as you might think, and in some subjects, you can even get a bursary of up to £28,000
- Earn a qualification for life, where you are always in demand



To find out more contact:  
+44 (0)1243 816000 | [primaryPGCE@chi.ac.uk](mailto:primaryPGCE@chi.ac.uk) | [secondaryPGCE@chi.ac.uk](mailto:secondaryPGCE@chi.ac.uk)  
#chiuni


 Teaching Excellence Framework

# Join Vectis Girls








**Sundays**  
**11.00-11.50am**  
**Wootton Rec**  
**PO33 4NQ**  
Email:  
[vectisvc@gmail.com](mailto:vectisvc@gmail.com)



**TRY RUGBY WITH US!**  
Visit [findrugby.com](http://findrugby.com)

**VECTIS RUGBY CLUB**

**VE DAY**  
80<sup>TH</sup> ANNIVERSARY  
A SHARED MOMENT OF CELEBRATION  
8 MAY 2025

**Thursday 8th May 2025**  
**VE Day Celebrations in Wellow**  
**marking 80 Years since the end of WWII**

**3pm ~ 5pm** Complimentary Cream Tea at Wellow Institute.  
Bring your "Garden on a Plate" ~ judging at 430pm.

**VE Day Flag Hunt** on the Wellow Millennium Green from 3rd to 8th May; Flag Hunt forms in the Wellow Bus Shelter; prizes awarded to all who complete the form.

**9pm** Gather at the Wellow Millennium Green, bring a chair, a lantern and a bottle of something to raise a toast.

**930pm** VE Day Proclamation and Lighting of the Beacon

*With grateful thanks to the Shalfleet Parish Council and Tesco's Freshwater*



# Yarmouth VE Day Snap Card Trail

Trail: Tues 6<sup>th</sup> – Sat 10<sup>th</sup> May 2025



## Can you help?

We've lost 12 cards used by Island families in World War 2 to play Snap. They're hidden in 12 shop + pub windows in Yarmouth. Find each card, make a note of the letter next to it, identify the word they spell. **Come to Scoops** and let us know the word – first 40 get a free ice-cream!

**Drop-In @ The Earth Museum, Wheatsheaf  
Lane Saturday 10<sup>th</sup> May, 11-3pm**

Discover stories about Island life in wartime.

*Play safe and enjoy! Take care in areas of traffic. Ensure children are accompanied by a responsible adult who is responsible for all participants' safety.*





'We play loads of fun games, do activities and challenges and sometimes get badges'  
Matilda

## Rainbows

**Girls play, learn and have tons of fun**  
for ages 4 to 7

At Rainbows, we welcome all girls to play, learn and have fun in a creative, safe space for all abilities.



Registered charity number: 306016

Join a local Rainbows group [girlguiding.org.uk/joinus](http://girlguiding.org.uk/joinus)

# YARMOUTH MIDIS DANCE CLASSES

COME JOIN OUR FRIENDLY GROUP AND HAVE THE RIGHT SUPPORT WITH YOUR DANCE JOURNEY AT AQUARIUS SCHOOL OF DANCE

SATURDAY MIDIS 4:10-4:55PM

£5 PER PERSON

FOR AGES 7-12 YEARS

## BOOK NOW

EMAIL - [MICASAMPSON.DANCE@GMAIL.COM](mailto:MICASAMPSON.DANCE@GMAIL.COM)

PHONE - 07946643814

MESSANGER - @MICASAMPSON OR @AQUARIUSSCHOOLOFDANCE

GAIN CONFIDENCE

MAKE FRIENDS

LEARN A NEW SKILL









# Occupational therapy

## Parent advice sessions

The NHS Occupational Therapy Team will be running monthly parent advice sessions. These sessions are open to any families which don't have an existing referral.

The sessions will be with an Occupational Therapist and an Assistant.

The team will be able to give advice, signpost to other services / charities and support with completing a full referral to Occupational Therapy if it is felt the needs discussed require a full assessment.

The team will be able to support with advice around:

- Self Care tasks - e.g. washing, dressing, using cutlery, toileting
- Fine motor skill development
- Play skills
- Preschool / school readiness



### Session Dates for 2025

(more dates and locations may be added if required):

15 May, 19 June, 17 July, 18 September, 16 October, 20 November

Slots will be available at 9am, 10am and 11am.

Appointments will last for 45mins.

To book, contact the department on **01983 534520** or via email to **[iownt.paediatric-ot-mailbox@nhs.net](mailto:iownt.paediatric-ot-mailbox@nhs.net)**

Sessions will take place at the Childrens Therapies Department,  
St Mary's Hospital, Newport, Isle of Wight



PRESENTS.....



# BASKETBALL

## CAMP

YOUTH AGE

**5-18**

**JOIN  
NOW!**

MAY  
**30th & 31st**  
**10am - 4pm**

WEST WIGHT  
SPORTS CENTRE,  
Moa place,  
Freshwater

COST..  
**1 Day £30**  
**Both days £50**  
**Inc T-shirt**

**Central Discos**

"Entertainment that hits the target every time"

State of the art lighting effects  
Full Public Liability Insurance  
All events covered  
Wedding Specialists

Tel: 01983 754050

[www.centraldiscos.net](http://www.centraldiscos.net)





# Hovercraft Drawing Competition

Dear junior hovercraft architects

Hovertravel is celebrating 60 years of service – ferrying foot passengers across the Solent between the Isle of Wight and Portsmouth – and we want your students to be part of the celebration!

We're inviting young creatives to take part in an exciting drawing competition to design their version of the next generation of hovercraft for Hovertravel!

4 – 6 years old

7 – 9 years old

10 – 11 years old



## Amazing Prizes to Be Won!

**1st place:** A free group day return on the hovercraft for the winner's class (30 children plus teachers)\*

**2nd place:** A behind-the-scenes tour of Hovertravel for the winner's class (up to 30 children plus teachers)\*

**3rd place:** A family day return ticket for the winner's family.



## How to Enter:

- Ask your students to draw their vision of a futuristic hovercraft.
- can/take a clear photo **OR** drop students masterpieces to one of our Hovertravel terminals.
- Submit all entries to **marketing@hovertravel.com** or our terminals by 23rd May 2025.

One of our Hovertravel Captains and a hovercraft crew member will carefully review all submissions, and winners will be announced week commencing 9th June 2025.

We cannot wait to see all your exciting drawings and discover the creativity of your students. Let their imaginations take flight—who knows, their design could inspire the hovercrafts of tomorrow!

Best of luck, and happy drawing!

The Hovertravel Team

