



# Freshwater & Yarmouth C.E. Primary

The purpose of the Federation of the Church Schools of Shalfleet and Freshwater & Yarmouth is to educate children in an atmosphere of Christian love where all achieve the very best they can, now and throughout their lives.

<http://fosay.co.uk>

Headteacher: Mrs. E Grainger

Deputy Headteacher: Mrs. G Westhorpe

RESPECT • RESILIENCE • RELATIONSHIPS

## Attendance Matters



## ATTENDANCE

### WHY IS IT IMPORTANT?

#### ABSENCE FROM SCHOOL

Children are required by law to attend school 190 days per year. The Government states that every pupil's attendance should be at least 95%.

How do YOU measure up?

Attendance	Days Absent	Weeks Absent	Lessons Missed
95%	9 Days	2 Weeks	50 Lessons
90%	19 Days	4 Weeks	100 Lessons
85%	29 Days	6 Weeks	150 Lessons
80%	38 Days	8 Weeks	200 Lessons
75%	48 Days	10 Weeks	250 Lessons
70%	57 Days	11.5 Weeks	290 Lessons
65%	67 Days	13.5 Weeks	340 Lessons

89% & Below  
Drastic effect on  
academic achievement

95%-90%  
Cause for  
concern

100%-96%  
Excellent



## Attendance

Over a school year, we are due to open for 190 days which equates to 380 sessions with registration in the morning at 8.35am and after lunch in the afternoon.

**Attendance is affected if a pupil is not present at school for any whole session including registration.**

**Attendance Target**

**100%**

**Attendance Last week**

**89.81%**

**Attendance This Year**

**94.43%**

## Important Information

### Dates for your Diary

Friday 8<sup>th</sup> December – Christingle Service at 9am  
Monday 11<sup>th</sup> December – Christmas teacher challenge  
Wednesday 13<sup>th</sup> December – Beach Class and Little Stars production  
Wednesday 13<sup>th</sup> December – Federated Christmas music evening at Shalfleet at 5pm  
Friday 15<sup>th</sup> December – Christmas Worship  
Friday 15<sup>th</sup> December – Last day of term  
Monday 18<sup>th</sup> December – Development day  
Tuesday 19<sup>th</sup> December – Development day  
Tuesday 2<sup>nd</sup> January – Return to school

We would like to wish all our families and school community a wonderful Christmas and a peaceful New Year.

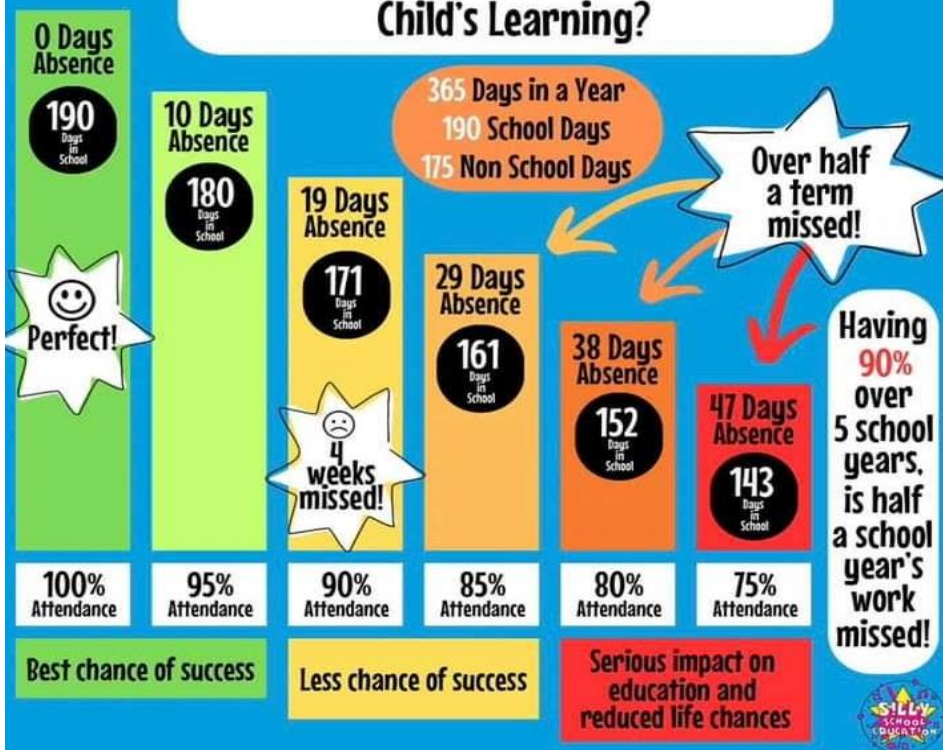
We look forward to seeing you all on 2<sup>nd</sup> January 2024

### Music Video

It's that time of year again where Mr Cook will be putting together the Christmas Music Performance Video. If you would like your child/children to be involved then please send a video to Harriet of your child/children singing/playing any piece on their instruments- it doesn't have to be a Christmas song!

Videos must be received by Monday 11<sup>th</sup> December to be included. Please send to [harrietbates@gmail.com](mailto:harrietbates@gmail.com)

### How Does School Attendance Affect a Child's Learning?



And the angel said to them,  
'Fear not, for behold, I bring you good news of great joy that will be for all the people'

Luke 2:10

# Our Mission Statement

We value and respect everyone within an atmosphere of Christian love. Our welcoming community builds strong relationships and is dedicated to supporting everyone to flourish academically, emotionally, socially and culturally through an excellent and engaging curriculum.

## Values

Our three R's are incredibly important to us. They represent qualities we believe everyone can identify with, regardless of age or role in our conscious community. They are the backbone to the conscious community as a whole.



**RESPECT**



**RESILIENCE**



**RELATIONSHIPS**

## Attendance

We prioritise the attendance of all children at our school and recognise the very strong link between attendance and academic success,

When you register your child at our school, you have a legal duty to ensure that your child attends every day that the school is open except in a small number of circumstances such as being too ill to attend or being given permission for an absence in advance (not holidays).

We will work together to help overcome any attendance issues.



# The Conscious Community

**What is the conscious community?**  
Every person in our Federation – including you and all adults – has an important responsibility. That is to be the best you can be. To do this you need to be aware of all that you do and feel; you also need to be aware of what others are doing and feeling too. This is what being in a conscious community is all about.

**Conscious = Aware      Community = All together**

**How do I make sure I am part of this?**      By thinking about both your actions/feelings and the actions/feelings of others through 3 important values:

<b>Respect</b>	<b>Resilience</b>	<b>Relationships</b>
<ul style="list-style-type: none"><li>- Celebrate your skills and talents</li><li>- Recognise what makes you great</li><li>- Be proud of what you achieve</li><li>- Celebrate other people's skills and talents</li><li>- Recognise what makes other people great</li><li>- Be proud of what other people achieve</li></ul>	<ul style="list-style-type: none"><li>- Making mistakes are great</li><li>- It's how we grow</li><li>- It is important we always respect them and learn from them</li><li>- Ask yourself these questions about your actions or the actions of others...<ul style="list-style-type: none"><li>- Why do I/they feel this way?</li><li>- Did I/they handle that situation in the best possible way?</li><li>- What could I/they do to improve the situation?</li><li>- Did I/they do the best I/they could?</li><li>- What can we learn from this situation?</li><li>- How can we move forward positively?</li></ul></li></ul>	<p>Show a good understanding of yourself and others by knowing what inspires you both, what you want, your beliefs, your needs and what can cause you and them to feel a certain way.</p> <p>In situations ask yourself and others...</p> <ul style="list-style-type: none"><li>- What is my/their point of view?</li><li>- What are my/their reasons?</li><li>- How am I/they feeling?</li><li>- What am I/they bringing to this situation?</li></ul>

**In a conscious community...**

<i>We are open</i>	<i>We are honest</i>	<i>We listen</i>
<i>We ask questions</i>	<i>We speak up</i>	<i>We respect privacy</i>

## Wellbeing

We acknowledge that mental health and wellbeing is of central importance and intrinsic to our lives.

We believe having a mentally healthy community is about being able to work together through any challenges and that everyone is feeling supported, heard, accepted, valued and empowered.

It is of paramount importance that if there is anything you feel is affecting your child's wellbeing or educational experience that you get in contact with us.

### School carpark

Some of our staff members have been unable to park for work due to parents parking in the staff carpark this week.

Please **DO NOT** park in the staff carpark at any time unless you hold a blue badge. The carpark is for school staff and Little Stars staff only.

### Mr Westhorpe's joke of the week!

**One snowman said to another**

**'Can you smell carrots?'**

### Winter is here

Winter has definitely arrived!

Children will be outside during playtime. Please can you make sure your child has a coat in school every day.

### Federation Christmas music evening

You are warmly invited to a Federation Christmas music evening on Wednesday December 13<sup>th</sup> from 5pm at Shalfleet school.

This will be an evening of carols and performances from the children.

Everyone welcome



### Upcoming PE Fixtures

All fixtures have now finished.

They will start again in the new year. Well done to everyone who has been involved in any of the fixtures this year. You have been amazing!

### Christmas post box

If your child has Christmas cards to send to their friends, the Christmas post box is ready to receive Christmas cards.

### Christingle Service

Our Christingle service will be held on Friday 8<sup>th</sup> December at 9am.

Everyone is welcome.





# Gold Awards

Last week's Gold Award winners are:

**Beach Class:** Kara, Kira, Albie and Jason

**Cove Class:** Daisie, Isla and Isambard

**Bay Class:** Keira, Bonnie and Austin

**River Class:** Whole Class

**Coast Class:** Poppie-Mae, Benji and Frankie

**Solent Class:** Whole Class

**Ocean Class:** Mya, Tanya, Dylan, Roman and whole class



## Birthdays

4<sup>th</sup> December – 31<sup>st</sup> December

Noah Jacob P

Tommy Freddie P

Eden

Happy birthday to you!

## Outdoor learning Golden Wellie

Well done to Tommy for winning the outdoor learning golden wellie last week.

Keep up the great work!



## Sports Tokens

Osbourne - 29

Lifeboat - 25

Needles - 7

Lighthouse – 20

Well done to  
Osbourne for  
collecting the most  
tokens this week!

## Little Stars Pre School

### **What have Little Stars been up to last week.....**

We've been having an Elf-tastic time! Everyone in Little Stars and Reception Class teamed up in their Christmas jumpers and Elf costumes for some Elf day fun!! There were a lot of jingling bells and pointy ears! It was just like Santa's workshop with busy elves everywhere!

Beautiful stained glass biscuits were made, flavoursome peppermint creams were created, pink wafers were transformed, hot chocolate and marshmallows were enjoyed, snowballs went flying, Christmas decorations were hung, colourful candy canes were threaded, snow-men were built, presents were wrapped, glitter was sprinkled, stories were shared, songs were sung, the list goes on!!

It really has been super-duper with the children. We have thoroughly enjoyed Elf day celebrations together! Things are certainly feeling festive with plenty of cheer!

Other things we have been up to: having Christmas dinner yum yum, decorating our own Christmas trees and baubles, preparing our party hats, exploring snow and painting ice.





# Santa Grotto

**Saturday 16th December 2023**  
**12pm - 6pm**

Yarmouth Guide & Scout Hall - Mill Road, Yarmouth

£5 to meet Santa and receive a toy

Refreshments available - Including mince pies and mulled wine

All money raised goes to the upkeep of the hall



## Isle of Wight family information hub

Helping families keep up to date with the information, support and advice that is available to them.

- Early years and childcare
- Health and wellbeing
- Housing and finance
- Learning and employment
- Leisure
- SEND Local Offer
- Start for Life and family hubs
- Support for families
- Young people

To find out more visit:

[www.familyinfohub.iow.gov.uk](http://www.familyinfohub.iow.gov.uk)



Tel: 01983 823169 Facebook: IWFamlyInfoHub

Email: [FamilyInformationHub@iow.gov.uk](mailto:FamilyInformationHub@iow.gov.uk)



SPOTLIGHT IOW LTD  
PRESENT

# Rapunzel

SHANKLIN  
THEATRE

**£2 OFF**  
each ticket when  
presented at the  
Box Office

**DECEMBER**  
2pm: 22nd, 23rd, 24th, 26th,  
27th, 28th, 29th, 30th and 31st  
6pm: 22nd, 23rd, 27th,  
28th and 30th  
Relaxed Show: signed using BSL  
29th at 11am, tickets £12

**JANUARY**  
2pm: 1st

**TICKETS**  
2 - 4 year olds £17  
Under 16s £18.50  
Seniors/wheelchair/carer £20.50  
Adult £22.50  
Party rates available  
Discount for blue light  
card holders

**BOX OFFICE 01983 868000**  
[shanklintheatre.com](http://shanklintheatre.com)

THE NEW  
STROLLING  
PLAYERS  
Present  
By Cheryl May

# The Emperor's New Clothes

**Tickets:**  
Available from Topknot & Tails Dog Grooming in Freshwater,  
Orchard Bros. in Freshwater Bay,  
and BluebytheSea in Yarmouth

Adult £8 Children £5  
Family £22 (2 adults and 2 children)

**PANTOMIME**

**Seeking a new wardrobe at  
Freshwater Memorial Hall**

**December 14th 7.30pm** **December 16th 2.30pm**  
**December 15th 7.30pm** **December 16th 7.30pm**

This amateur production is by arrangement with NODA Limited





Picture This.....  
.....Picture This  
Picture This.....

**10% OFF  
VOUCHER**

**Family Photo Shoot**  
**Photos make the best presents!**  
**No studio fee, just pay for photos**

To book text **Roz**  
**07850 505977**

**Saturday 9th December**  
**Colwell Bay Baptist Church Hall**  
**Colwell Road, Freshwater, PO40 9NB**

## Child to Parent Abuse and Violence

An information session designed to help parents and carers understand what it is, why it happens, how to manage it and how to keep yourself safe.



If you would like to participate,  
please reserve your place by  
emailing  
[katrina.austin@hants.gov.uk](mailto:katrina.austin@hants.gov.uk)

Wednesday (TEAMS) 6:00pm-7:30pm	Friday (Face to Face) Galaxy Centre, Chillerton & Rookley Primary School 11:00am-12:30pm
08/11/23	17/11/23
06/12/23	15/12/23
10/01/24	19/01/24
07/02/24	23/02/24
06/03/24	15/03/24
17/04/24	19/04/24
08/05/24	17/04/24
05/06/24	14/06/24
03/07/24	12/07/24



## Sensory Friendly Christmas Workshop

Delivered by The Isle of Wight  
Wellbeing Service

Join us online for a 60-minute  
information session, providing tips,  
tricks, strategies and support in  
preventing and managing sensory  
overload during the festive period.

To join, or for more information please  
email [katrina.austin@hants.gov.uk](mailto:katrina.austin@hants.gov.uk).







Freshwater & Yarmouth  
Church of England Primary School  
*Together for a Brighter Future*

# LITTLE STARS

## SUPPORT WITH CHILDCARE COSTS



FROM 2 JANUARY 2024, ELIGIBLE WORKING PARENTS CAN APPLY FOR 15 HOURS OF CHILDCARE FOR THEIR TWO-YEAR-OLD.

PARENTS HAVE UNTIL 31 MARCH 2024 TO APPLY FOR A CODE, WITH MID-JANUARY TO THE END OF FEBRUARY BEING THE OPTIMUM TIME TO APPLY IN CASE FURTHER INFORMATION IS REQUIRED TO SUPPORT THE APPLICATION. TO APPLY FOR A CHILDCARE CODE EACH PARENT NEEDS TO BE WORKING AND EARNING THE EQUIVALENT OF 16 HOURS A WEEK AT NATIONAL MINIMUM/LIVING WAGE AND UNDER £100,000 ADJUSTED NET INCOME PER YEAR.

THERE IS MORE INFORMATION ON THE CHILDCARE SUPPORT AVAILABLE TO PARENTS ON THE CHILDCARE CHOICES WEBSITE, WHERE YOU CAN EXPLORE THE EARLY EDUCATION ENTITLEMENTS AND OTHER GOVERNMENT HELP WITH CHILDCARE COSTS.



## The upcoming expansion

Starting from April 2024, existing childcare support will be expanded in phases. By September 2025, most working families with children under the age of 5 will be entitled to 30 hours of childcare support.

The changes are being introduced gradually to make sure that providers can meet the needs of more families. **This means that:**

From **April 2024**, eligible working parents of 2-year-olds will be able to access 15 hours childcare support.

From **September 2024**, 15 hours childcare support will be extended to eligible working parents of children from the age of 9 months to 3-year-olds.

From **September 2025**, eligible working parents of children under the age of 5 will be entitled to 30 hours of childcare a week.

Like the existing offer, depending on your provider, these hours can be used over 38 weeks of the year (during school term time), or up to 52 weeks if you use fewer than your total hours per week.

Sign up for more details about the upcoming expansion from April 2024, as well as how and when to register for support with childcare costs.



