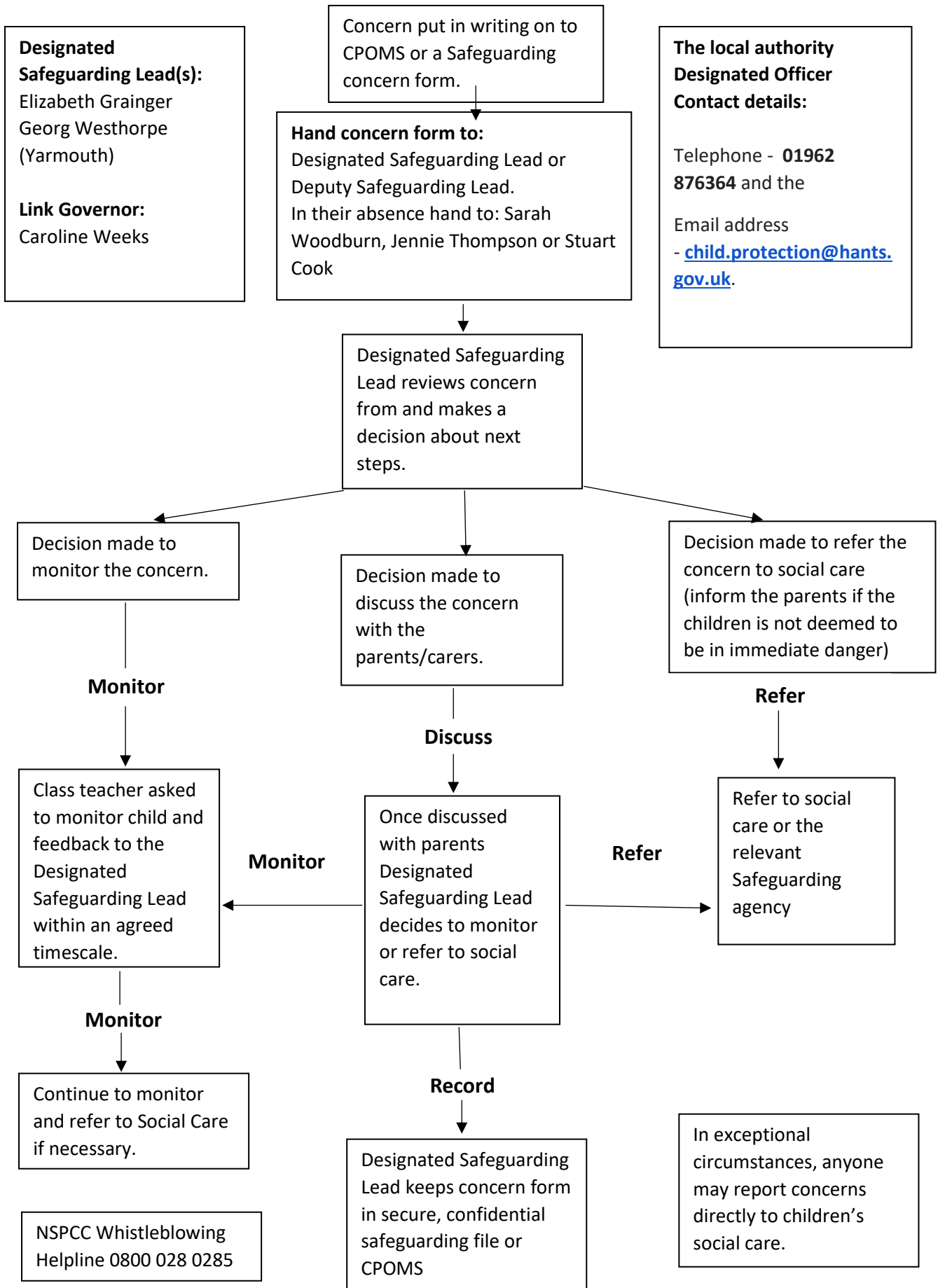


THE FEDERATION OF SHALFLEET AND YARMOUTH C.E. PRIMARY SCHOOLS
 FLOW CHART FOR RAISING SAFEGUARDING CONCERNS ABOUT A CHILD



Designated Safeguarding Lead(s):
 Elizabeth Grainger
 Georg Westhorpe
 (Yarmouth)

Link Governor:
 Caroline Weeks

Hand concern form to:
 Designated Safeguarding Lead or Deputy Safeguarding Lead.
 In their absence hand to: Sarah Woodburn, Jennie Thompson or Stuart Cook

The local authority Designated Officer Contact details:

Telephone - **01962 876364** and the

Email address - child.protection@hants.gov.uk.

Designated Safeguarding Lead reviews concern from and makes a decision about next steps.

Decision made to monitor the concern.

Monitor

Class teacher asked to monitor child and feedback to the Designated Safeguarding Lead within an agreed timescale.

Monitor

Continue to monitor and refer to Social Care if necessary.

NSPCC Whistleblowing Helpline 0800 028 0285

Decision made to discuss the concern with the parents/carers.

Discuss

Once discussed with parents Designated Safeguarding Lead decides to monitor or refer to social care.

Monitor

Refer

Refer to social care or the relevant Safeguarding agency

Record

Designated Safeguarding Lead keeps concern form in secure, confidential safeguarding file or CPOMS

Decision made to refer the concern to social care (inform the parents if the children is not deemed to be in immediate danger)

Refer

In exceptional circumstances, anyone may report concerns directly to children's social care.