



The purpose of the Federation of the Church Schools of Starfleet and Yarmouth is to educate children in an atmosphere of Christian love where all achieve the very best they can, now and throughout their lives.

Headteacher: Mrs. E Grainger

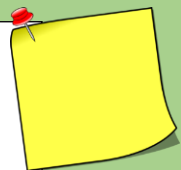
Shalfleet C.E Primary Newsletter

8th February 2019

Bulletin Board

This board will give you regular updates on which letters that have been sent out this week and what date they need to be returned to the office.

- YR 5&6 trip letter to Gosport Submarine Museum- Due back Monday with payment



Here at Shalfleet, we have an open door policy and that if there is something on a parent/carers mind, please do come and talk to us. A problem shared is a problem halved.



After our Parent Forum meeting last week, we have received feedback regarding the newsletter format. Generally people are pleased with the new layout as it is much clearer. However, they asked for us to amalgamate the dates. Please see the new dates for your diaries.

Please can we remind all parents that your children should not be dropped off before 8:20am. If you wish for your child to be dropped to school earlier then Little Explorer's provide a breakfast club from 8am. Please contact them on 760269 option 1 for details.

Contacting the school

To report your child's absence, please email or ring the school office by 9am, every day that your child is absent.

Please contact the office via email or leave a message on the answerphone to report your child absent and to notify us of pick up arrangements, please do not dojo the class as the teachers aren't always able to action these messages during the day.

office@shalfleetceprimary.co.uk



SCHOOL'S LATEST NEWS

School Places Planning

Some of you will have seen the article in the County Press regarding the School Places Planning in the West Wight area. At this stage, the Federation do not have any further information to share. Like the other primaries, the Co-Chairs of Governors and Mrs Grainger have been invited to meetings with leaders of education on the 15th of February. After this, we hope to be able to provide you with an update.

Please be aware though, that there will be a public consultation. We encourage everyone in our community to support our schools in engaging with the consultation wholeheartedly.

Those of you who had read the County Press article may have noticed that it was reported that Yarmouth have a capacity of 140 pupils. This is incorrect, our capacity is actually 105 pupils.

Should you wish to contact the governors, please feel free to speak to:

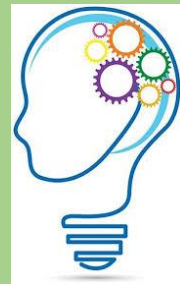
Laura Homes, Parent Governor
Debs Downer, Foundation Governor
Steve Holland, Co-opted Governor.

They can be contacted via the school offices.

Thank you very much for your support.

Mental Health Awareness

Here at Shalfleet Primary our aim is to care for and develop the children educationally, emotionally and physically. As well as caring for their education we also care for their mental health and wellbeing and feel that it is essential to provide children with information to enable them to make life long, well informed decisions about their diet and health. Children's Mental Health Week gives us an opportunity to raise awareness and donations. During next week all children will be doing mindfulness activities in class and we will also be holding a mufti day on Friday 15th February in exchange for £1.



REMINDER!

Don't forget that our Federation Fun Quiz is Friday 15th February 2019 at Yarmouth CE Primary School. If you would like to participate then please come in and register!

Maximum of 6 per team, you must register your team at either Yarmouth or Shalfleet office with a payment of £2 per person. Quiz begins at 7pm



SCHOOL ATTENDANCE

Attendance Matters

Our attendance is recorded in line with the Education Welfare guidelines.

Our school attendance target is 100%

Congratulations to Year 4 who achieved the highest attendance this week with 95.83%!

Whole School Attendance Matters!

Our aim is to get our whole school attendance to 100%. Please see the examples of attendance levels and the impact they can have:

100%	95%	90%	85%	80%	75%
No days lost	10 days lost	19 days lost	29 days lost	38 days lost	47 days lost
190 school days each year	180 school days each year	171 school days each year	161 school days each year	152 school days each year	143 school days each year
Success!	Makes progress harder			Not fair on your child- possible legal actions	

Please can we remind all parents/carers that no holidays are authorised. We cannot stop you from taking your child/ren away but we would advise you not to as we would never authorise this kind of absence.

If you have any queries on this information then please do not hesitate to contact us.

School Matters!



Attend Today, Achieve Tomorrow



every day counts

ATTEND TODAY -
ACHIEVE TOMORROW!

DATES FOR YOUR DIARIES

WE RUN COLLECTIVE WORSHIP EVERY FRIDAY AT 8:45AM WHERE WE SHARE GOLD TICKETS/GOLD AWARDS. HOWEVER PLEASE SEE BELOW FOR ACHIEVEMENTS AND CLASS SHARINGS AND ANY OTHER DATES

Date	Events
Feb	
8 th	Y1 Sharing
15 th	Achievements Federation Quiz @ 7pm Mufti Day- Mental Health
HALF TERM	
March	
8 th	YR Sharing
22 th	Y6 Sharing
April	
5 th	Easter Church Service
Half term	
May	
3 rd	Y5 Sharing
24 th	Achievements
17 th	Y4 Sharing
June	
14 th	Y3 Sharing
28 th	Y2 Sharing
July	
12 th	Achievements
19 th	Leavers Service at School



Communicake

9.30am 10th May

Parent Forum

2:15pm 28th March

2:15pm 9th May

2:15pm 13th June

SPORT FIXTURES

Sports Report Shalfleet

On Tuesday KS1 took part in an inter house archery competition. The children have been practicing in PE all half term and it certainly showed with some excellent bowmanship. The competition was very tight with 2 teams Kingfishers & Eagles coming joint 3rd on 18 points. The other 2 teams were very tight and it went right down to the final couple of shots, with Woodpeckers (34 points) just pipping Robins (31 points) by 3 points. Well done to all who took part.



SPORT FIXTURES

Date	Event
	Feb
13 th	U11 Shalfleet v Yarmouth

Girl's football match

5th February 2019

We played Godshill at our home ground. This was one of our best matches we have played as a new team. Our goals were scored by Erin Sharp and Aimee Rann. Both sides played well and by the end we had come to a draw. Overall we worked as a team and played our best. Well done teams!

By Jess Green Maisie Rann

Student Feedback

Starting from next week, we asking for a student to give us feedback of their recent sport fixture and how well they did. You will be able to find the comments here from 14th February.

FUNDRAISING

Easyfundraising

Did you know that whenever you buy anything online - from your weekly shop to your annual holiday - you could be collecting free donations for Shalfleet CE Primary School? There are over 3,000 shops and sites on board ready to make a donation, including Amazon, John Lewis, Aviva, thetrainline and Sainsbury's - it doesn't cost you a penny extra!

It's as easy as 1, 2, 3...

1. Head to <https://www.easyfundraising.org.uk/causes/shalfleetprimary/> and join for free.



Federation Fun Quiz

Friday 15th February 2019 at Yarmouth CE Primary School

Maximum of 6 per team, you must register your team at either Yarmouth or Shalfleet office with a payment of £2 per person.

Quiz begins at 7pm



Recycle Michael -

Reminder to donate using the collection outside. The school receives money by weight of donations collected.



give thanks
to the LORD,
FOR HE IS GOOD;
HIS LOVE endures
forever.

PSALM 107:1

